

THE IMAGINE SERIES

The Imagine

5023

27' x 56'

DIMENSIONS

1,493 sf

LIVING SPACE

3

BEDROOMS

2

BATHROOMS

OVERVIEW

Split bedroom 3 Bed + 2 Bath Doublewide. Customize 3rd bedroom with optional den and optional island in the kitchen. Side entry from utility room gives location flexibility on lot.

Heritage Home Center

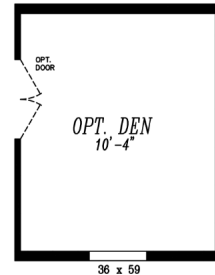
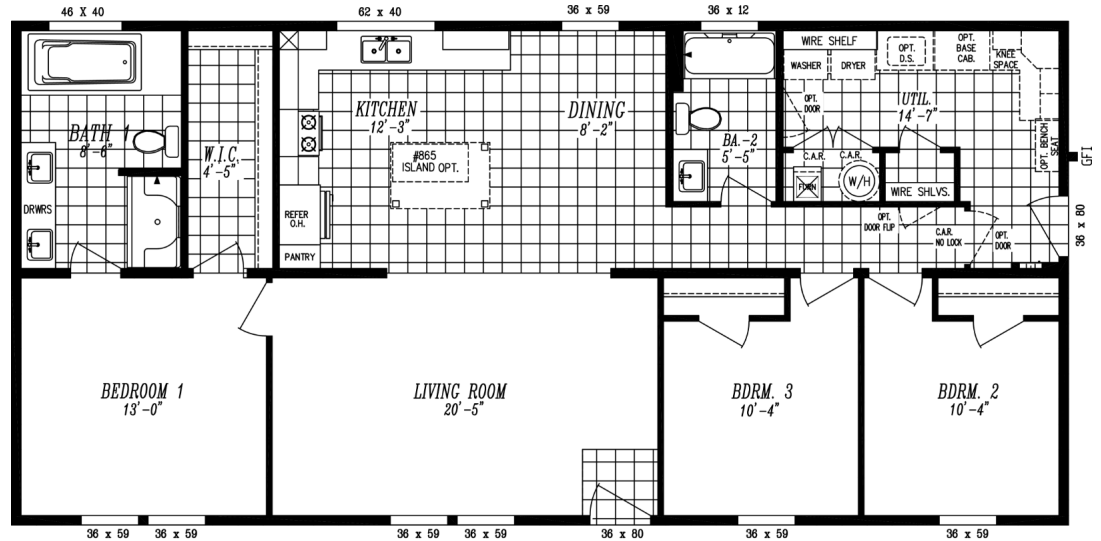
(425) 353-5464

or Request Firm Quote

EMAIL US

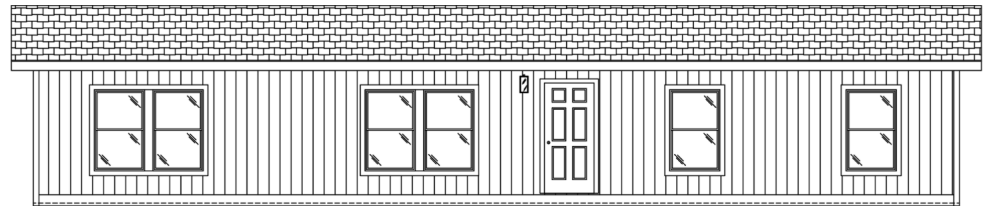
01 FLOOR PLAN

1,493 SQ FT · 27' x 56'

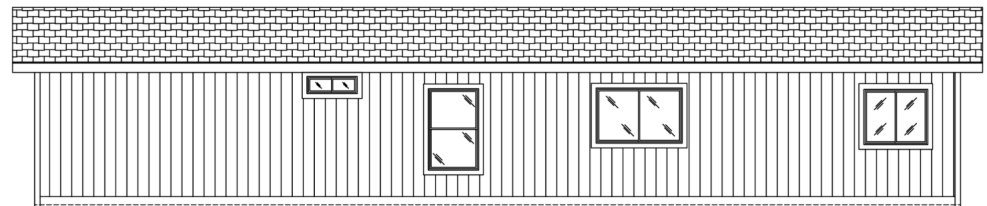


OPT. DEN I.P.O BEDROOM

02 FRONT ELEVATION



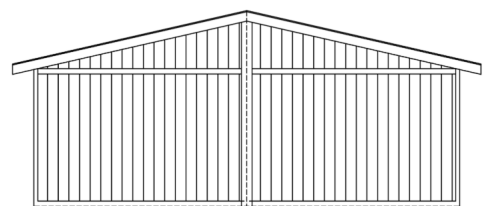
FRONT SIDEWALL



REAR SIDEWALL



FRONT ENDWALL



REAR ENDWALL

The Imagine 5023

3 Bedrooms | 2 Bathrooms | 1,493 sq ft

STANDARD FEATURES

- ✓ Energy Star Rating
- ✓ LP SmartSide Panel Siding with 5/50 Year Warranty
- ✓ Standard Deluxe Bath 1 with 6' Deck Tub and 60" Fiberglass Double Bench Seat Walk In Shower
- ✓ 2x6 Exterior Wall Studs
- ✓ Wood Cased Windows w/Flat Trim
- ✓ Rheem 50 Gallon Water Heater
- ✓ 4 Standard Can Lights in Living Room and Family Room
- ✓ Rounded Drywall Corners
- ✓ Samsung Kitchen Appliances

MOST POPULAR UPGRADES

- ✓ 80 Lb. Roof Load for high snow areas
- ✓ Cement Board Lap Siding
- ✓ 20' Open Face Dormer
- ✓ 27.4 Side by Side Refrigerator
- ✓ Self Clean, Smooth Top Convection Range
- ✓ Above Range Microwave with Cabinets
- ✓ Energy Star Dishwasher
- ✓ 2" Blinds
- ✓ Wood Shelving in Closets and Pantries
- ✓ 8# Carpet Pad
- ✓ 9' Flat Ceiling with Enlarged Windows

Heritage Home Center

Washington's Price and Volume Leader

(425) 353-5464

CALL TO TOUR

[Request Firm Quote](#)

EMAIL US

Features/specs subject to change.

The Imagine 5023

3 Bedrooms | 2 Bathrooms | 1,493 sq ft

Photo Gallery



Photo 1



Photo 2

Heritage Home Center
Washington's Price and Volume Leader

(425) 353-5464
— CALL TO TOUR

[Request Firm Quote](#)
— EMAIL US

Features/specs subject to change.